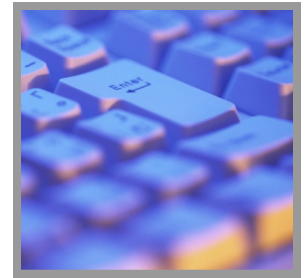


**WASHINGTON ACADEMY OF  
ARTS AND TECHNOLOGY  
PERFORMANCE REPORT  
2009/2010**

*A Community Centered School*



**Our Staff**

Administrators-1  
Certified Staff-10

**What are some indicators of our school's success?**

- On-line learning
- Contract-based learning
- GED studies
- Polaris (High school-Alternative Program)
- MAP (Middle-level Alternative Program)
- Homelink (Homeschool Family Support Program)
- Drug & alcohol support programs
- FASST Counslors
- On-line credit retrieval
- ASB
- Yearbook
- Parenting & childcare courses
- Work Based Learning opportunities
- Cooking lessons
- Nutrition lessons
- Skill Center
- Project-based learning
- Social skills & self-control lessons
- Sports participation
- Special education support
- Computer networks
- 13 year plan with culminating project
- Career and technical education opportunities
- Running Start

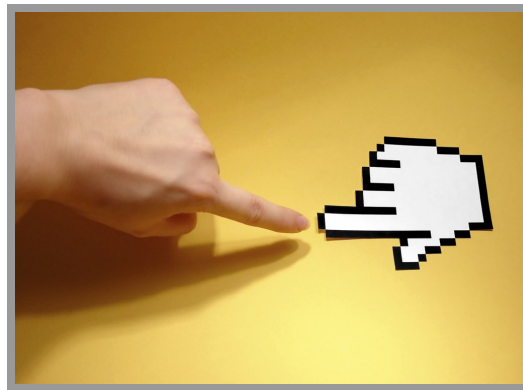
**MISSION STATEMENTS**

**East Valley School District Mission Statement:**

East Valley school District will inspire all students to achieve academic excellence and to become responsible citizens.

**Washington Academy of Arts and Technology Vision Statement:**

*To offer educational choices that engage and inspire students throughout their K-12 educational journey in a manner that affords them an opportunity to graduate with the knowledge and skills necessary to adapt with ease to a changing society.*



**How can you help?**

WAAT provides various non-traditional learning opportunities within several programs. These programs often need volunteer help. All classroom teachers seek and appreciate parent support in their classrooms. This may vary from helping out with the Farm to School project with Polaris students, helping out in the Otis Orchards Library Community Garden with teen parents, providing babysitting for the children of teen parents, or assisting with projects in our programs.

**OUR STUDENTS**

<b>African American</b>	<b>1.4%</b>
<b>Asian</b>	<b>3.1%</b>
<b>Native American</b>	<b>.55%</b>
<b>Hispanic</b>	<b>4.0%</b>
<b>Caucasian</b>	<b>79.3%</b>

**Special features about our school**

**Extensive Community Involvement**

- Guest Speakers
- Volunteers
- Farm to School Project
- Otis Orchards Library
- Community Garden
- Donations
- Children's Home Society
- Food Sense/WSU

**Other Various Special Features**

- Babysitting provided for teen parents
- Nursery/Toddler room for teen parents
- Transportation available for all in-district students
- Transportation available for all in/out of district teen parents within specific boundaries
- Community resource library located at Community Connections Center

**East Valley School District #361**  
 12325 East Grace  
 Spokane, WA 99216-4511  
 Phone: 509-924-1830  
 Fax: 509-927-9500  
 Email: evsd.org

**East Valley School District Financial Resources**

**Revenue Sources**

State	67.82%
Federal	14.28%
Local Property Tax	15.49%
Local Non Tax	2.41%
Other	0%

**Per Pupil Annual Expenditure**  
**\$10,064**

**Students in Supplementary Programs**

Polaris High School	68
Contract-based learning	40
GED studies	23
Teen Parent	23
MAP	10
On-line learning	170
Skill Center	8
On-line credit retrieval	20
Homelink	54
KEYS	143
Work Based Learning	15
Special Education	19

**Washington Academy of Arts and Technology School Improvement Plan**

**Three year School Improvement Plan for Math, Reading, and Staff Development**

**Math**

In response to state performance expectations for K-12 math, WAAT will:

- The analysis of math HSPE and other testing data will identify and target areas for student growth.
- Students will take end of course math exams to demonstrate their mastery of state performance expectations in math.
- Cooking lessons offered through Food Sense & Washington State University will supplement the math curriculum through practical lessons in weights and measurements.

**Reading**

In response to state performance expectations for K-12 reading, WAAT will:

- Continue to provide students the opportunity to read on a daily basis. Teachers in all subject areas will focus on the development of reading in all areas of the curriculum.
- The analysis of reading HSPE and other testing data will identify and target areas for student growth.

**Staff Development**

- Teachers will continue to train in Positive Behavior Intervention Systems.
- Staff will focus on performance based learning.
- All staff will be included in trainings to increase skill levels related to subject matter to be taught.

**We're on the Web!**  
[www.evsd.org](http://www.evsd.org)

**Student Participation**

Students have the opportunity to participate in a variety of sports and activities offered throughout the district. These include, but are not limited to:

- Band, orchestra, choir, and drama
- Fall sports-Cheerleading, dance, football, cross country, slow pitch softball, volleyball, and girls soccer
- Winter sports-Cheerleading, dance, basketball, and wrestling
- Spring sports-Baseball, softball, track, golf, tennis, and boys soccer

**Assessment Test Results**

08-09 WASL	Reading	Math	Writing	Science
4th grade	69.2%	76.9%	76.9%	
5th grade	64.7%	70.6%		35.3%
7th grade	58.1%	54.8%	56.7%	
8th grade	61.1%	40.0%		40.0%
10th grade	37.1%	11.4%	66.8%	12.2%